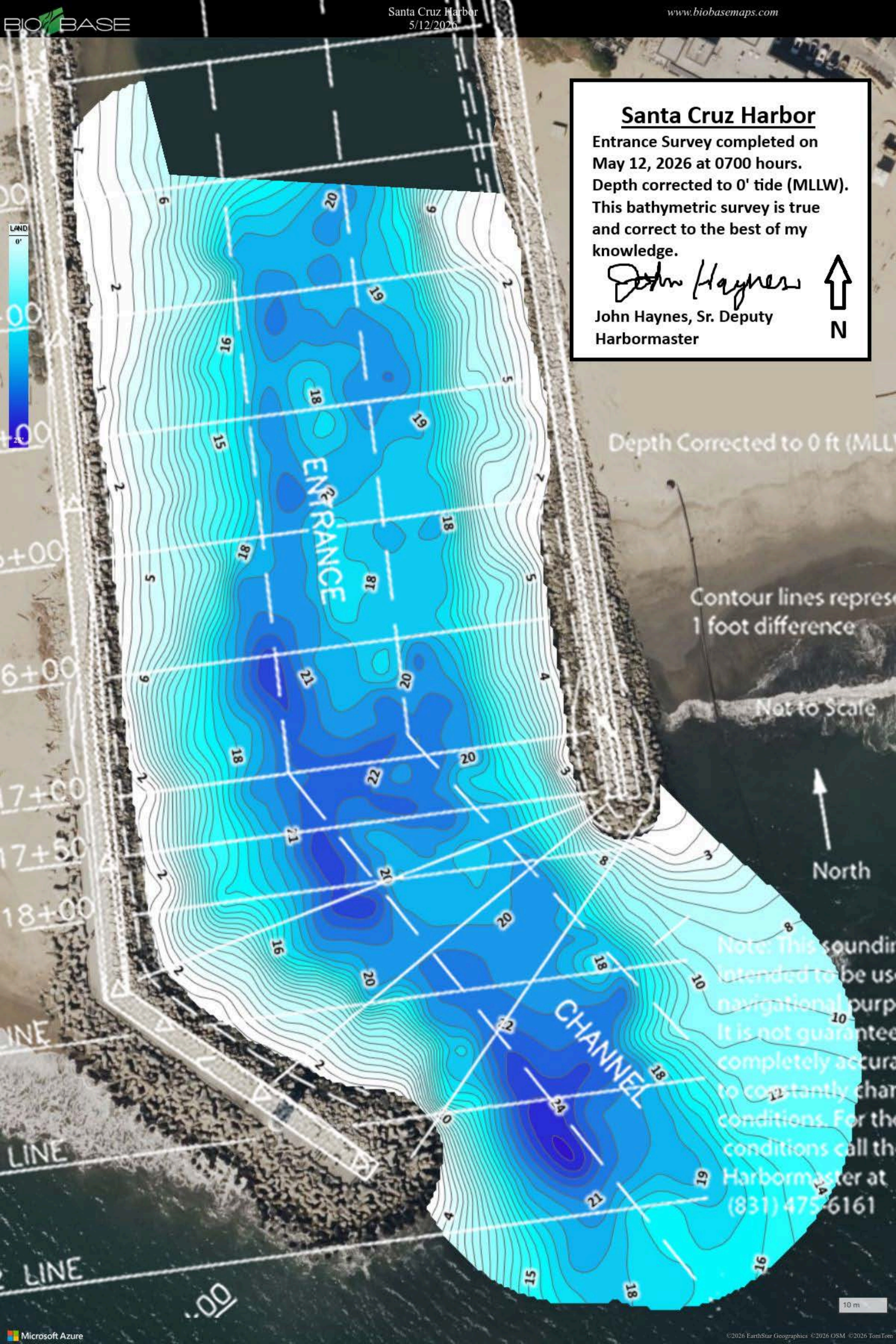


Santa Cruz Harbor

Entrance Survey completed on
May 12, 2026 at 0700 hours.
Depth corrected to 0' tide (MLLW).
This bathymetric survey is true
and correct to the best of my
knowledge.

John Haynes, Sr. Deputy
Harbormaster



Depth Corrected to 0 ft (MLLW)

Contour lines represent
1 foot difference

Not to Scale



Note: This sounding
intended to be used
for navigational purposes.
It is not guaranteed
to be completely accurate
due to constantly changing
conditions. For the
latest conditions call the
Harbormaster at
(831) 475-6161