



TO: Port Commission

FROM: Holland MacLaurie, Port Director

DATE: April 15, 2023

SUBJECT: Public Hearing to Receive Input from the Community Regarding the Creation of a Port Commission District-Based Electoral System Pursuant to Elections Code §10010

- Recommendation:**
- 1. Conduct a Public Hearing to review public testimony on the composition of districts for a district-based electoral system pursuant to Elections Code § 10010;***
  - 2. Provide direction to the Port District's demographer regarding the composition of districts for a district-based electoral system pursuant to Elections Code § 10010.***

## **BACKGROUND**

On August 10, 2021, the Port Commission adopted Resolution 21-03 declaring its intent to transition from at-large to district-based elections for its Port Commissioners commencing with the General Election in November 2024. Elections code Section 10010 provides that the Port District conducts four public hearings to receive community feedback on the proposed composition of the five districts.

Since adoption of the Resolution of Intent, the Port District has been engaged in outreach efforts to inform the public about district elections and the process associated with their formation. A webpage ([www.santacruzharbor.org/transition-to-district-based-elections/](http://www.santacruzharbor.org/transition-to-district-based-elections/)) was developed to provide information about district elections including opportunities for when and how the public can be engaged, the official notice of Public Hearings was translated (English/Spanish), and an article was placed in the Santa Cruz Harbor February and March monthly newsletters.

On March 28, 2023, the Port Commission conducted the second of four Public Hearings. Input regarding the composition of District boundaries is summarized in Attachment A.

## **ANALYSIS**

Based on public input, Commission direction, and other legally required criteria, the District's demographer submitted four proposed draft maps for public review and comment (Attachment B). The draft maps were posted to the District's website on April 13, 2023.

It is recommended that the Port Commission review the draft maps and discuss any proposed modifications. Any modifications to the boundary maps will be republished for public review at least seven days before final consideration.

NEXT STEPS:

On May 23, 2023, the Port Commission will conduct a fourth Public Hearing to adopt a preferred district map and introduce an ordinance to transition to a district-based electoral system. The ordinance will take effect 30 days after its adoption and will govern the 2024 General Election.

**IMPACT ON PORT DISTRICT RESOURCES**

There will be significant staff time needed to transition to a district-based electoral system due to the need to conduct multiple Public Hearings, in addition to the cost for a demographic consultant. The FY24 budget includes the costs associated with transitioning to by-district voting.

- ATTACHMENTS:
- A. Community Input on Composition of District Boundaries
  - B. Draft Maps (published April 13, 2023)
  - C. National Demographics Corporation (NDC) - Draft Maps Presentation

Santa Cruz Port District  
**COMMUNITY INPUT ON THE COMPOSITION OF DISTRICT BOUNDARIES**

Public Hearing of March 6, 2023, 5:30 PM

Public Hearing to Receive Public Input on the Port District's Transition to District-Based Elections for its Commissioners Pursuant to Elections Code §10010.

The following community feedback was received at the public hearing:

- Support for shaping districts by watersheds.
- Support for neighborhoods surrounding the harbor to be considered a community of interest.
- Support for indicating the location of the Santa Cruz Harbor on the district map.

Public Hearing of March 28, 2023, 5:30 PM

Public Hearing to Receive Public Input on the Port District's Transition to District-Based Elections for its Commissioners Pursuant to Elections Code §10010.

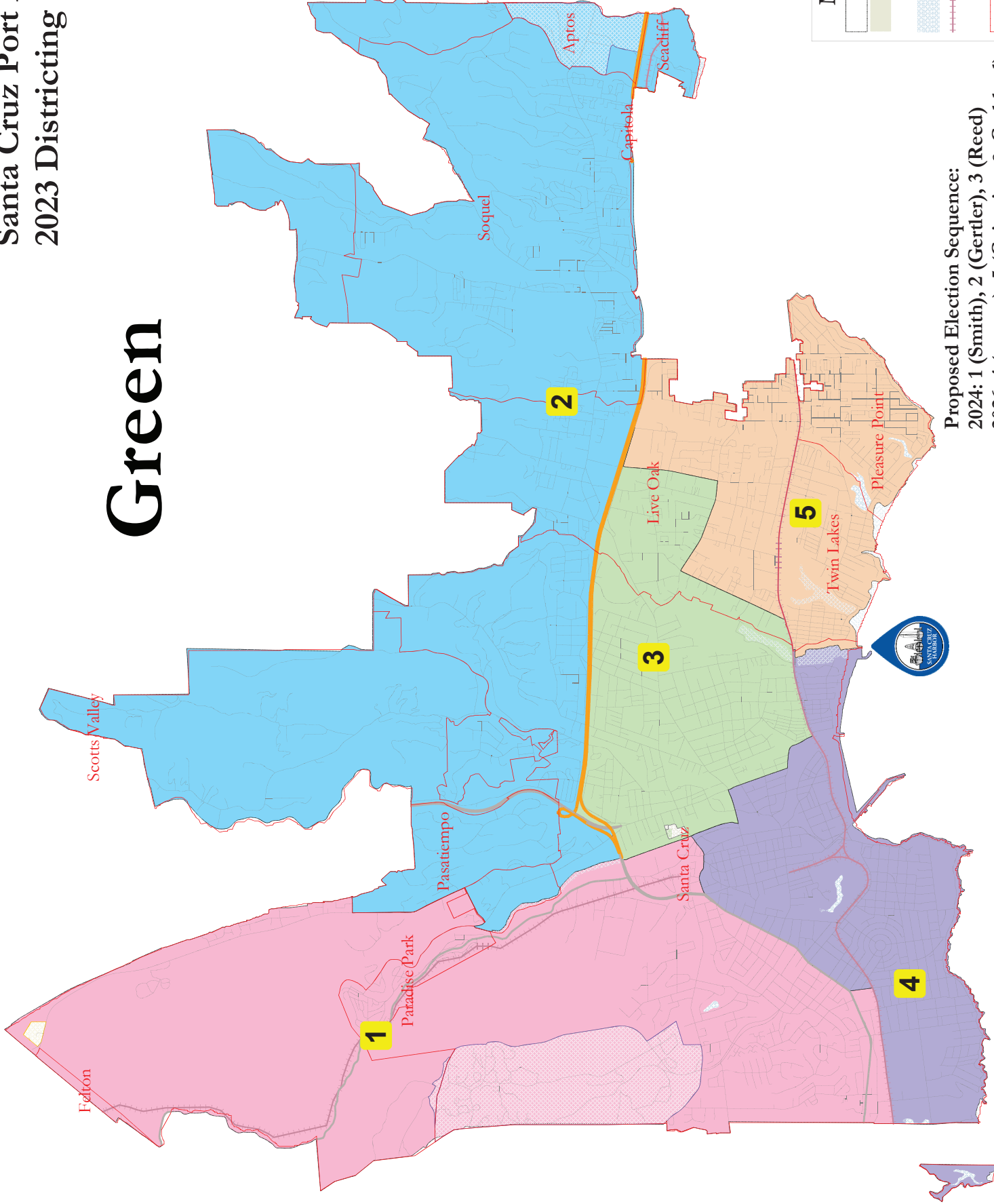
*Public input was solicited, but no feedback was received.*

The following Port Commission feedback was received at the public hearing:

- Support for viewing a draft map in which each district has a boundary touching the harbor.

Santa Cruz Port District  
2023 Districting

# Green



Green							
District		1	2	3	4	5	Total
	Total Pop	19,461	19,358	19,482	20,769	19,875	98,945
	Deviation from ideal	-328	-431	-307	980	86	1,411
	% Deviation	-1.66%	-2.18%	-1.55%	4.95%	0.43%	7.13%
Total Pop	% Hisp	21.4%	20%	24%	25%	27%	24%
	% NH White	56%	68%	63%	59%	62%	62%
	% NH Black	4%	2%	2%	2%	2%	2%
	% Asian-American	15%	6%	6%	9%	5%	8%
Citizen Voting Age Pop	Total	17,941	15,429	15,535	15,444	15,370	79,719
	% Hisp	18%	15%	16%	17%	15%	16%
	% NH White	60%	76%	74%	71%	74%	71%
	% NH Black	2%	2%	1%	3%	2%	2%
	% Asian/Pac.Isl.	15%	3%	5%	5%	5%	7%
Voter Registration (Nov 2020)	Total	11,983	14,131	13,627	13,540	13,749	67,030
	% Latino est.	10%	12%	14%	14%	15%	13%
	% Spanish-Surnamed	10%	11%	13%	13%	13%	12%
	% Asian-Surnamed	5%	3%	2%	3%	2%	3%
	% Filipino-Surnamed	1%	1%	1%	1%	1%	1%
	% NH White est.	82%	83%	83%	78%	82%	82%
	% NH Black	2%	2%	1%	3%	1%	2%
Voter Turnout (Nov 2020)	Total	9,910	12,572	11,724	11,308	11,871	57,385
	% Latino est.	9%	11%	13%	13%	14%	12%
	% Spanish-Surnamed	9%	11%	12%	12%	13%	11%
	% Asian-Surnamed	4%	3%	2%	3%	2%	3%
	% Filipino-Surnamed	4%	3%	2%	3%	2%	3%
	% NH White est.	84%	84%	84%	80%	83%	83%
	% NH Black	1%	2%	1%	3%	1%	1%
Voter Turnout (Nov 2018)	Total	8,405	9,780	9,469	8,911	9,076	45,641
	% Latino est.	16%	14%	16%	19%	19%	17%
	% Spanish-Surnamed	9%	8%	10%	11%	11%	10%
	% Asian-Surnamed	4%	2%	2%	3%	2%	3%
	% Filipino-Surnamed	1%	1%	1%	1%	1%	1%
	% NH White est.	83%	86%	86%	82%	85%	84%
	% NH Black est.	1%	2%	1%	3%	1%	1%
ACS Pop. Est.	Total	21,667	19,908	19,578	20,401	20,540	102,095
Age	age0-19	29%	22%	17%	18%	20%	21%
	age20-60	56%	52%	61%	61%	56%	57%
	age60plus	15%	26%	22%	21%	24%	21%
Immigration	immigrants	14%	9%	11%	16%	16%	13%
	naturalized	47%	53%	49%	39%	48%	46%
Language spoken at home	english	71%	85%	79%	74%	74%	76%
	spanish	12%	11%	14%	17%	21%	15%
	asian-lang	9%	1%	3%	5%	2%	4%
	other lang	8%	3%	3%	5%	3%	5%
Language Fluency	Speaks Eng. "Less than Very Well"	4%	3%	6%	8%	9%	6%
Education (among those age 25+)	hs-grad	33%	51%	49%	43%	45%	45%
	bachelor	29%	27%	25%	29%	28%	27%
	graduatedegree	36%	17%	21%	22%	19%	22%
Child in Household	child-under18	20%	27%	24%	19%	25%	23%
Pct of Pop. Age 16+	employed	53%	61%	66%	61%	62%	61%
Household Income	income 0-25k	16%	8%	19%	24%	15%	16%
	income 25-50k	13%	12%	15%	18%	16%	15%
	income 50-75k	9%	14%	11%	9%	13%	11%
	income 75-200k	41%	46%	41%	37%	40%	41%
	income 200k-plus	21%	21%	14%	13%	16%	17%
Housing Stats	single family	77%	86%	69%	61%	71%	72%
	multi-family	23%	14%	31%	39%	29%	28%
	rented	39%	29%	53%	63%	42%	46%
	owned	61%	71%	47%	37%	58%	54%

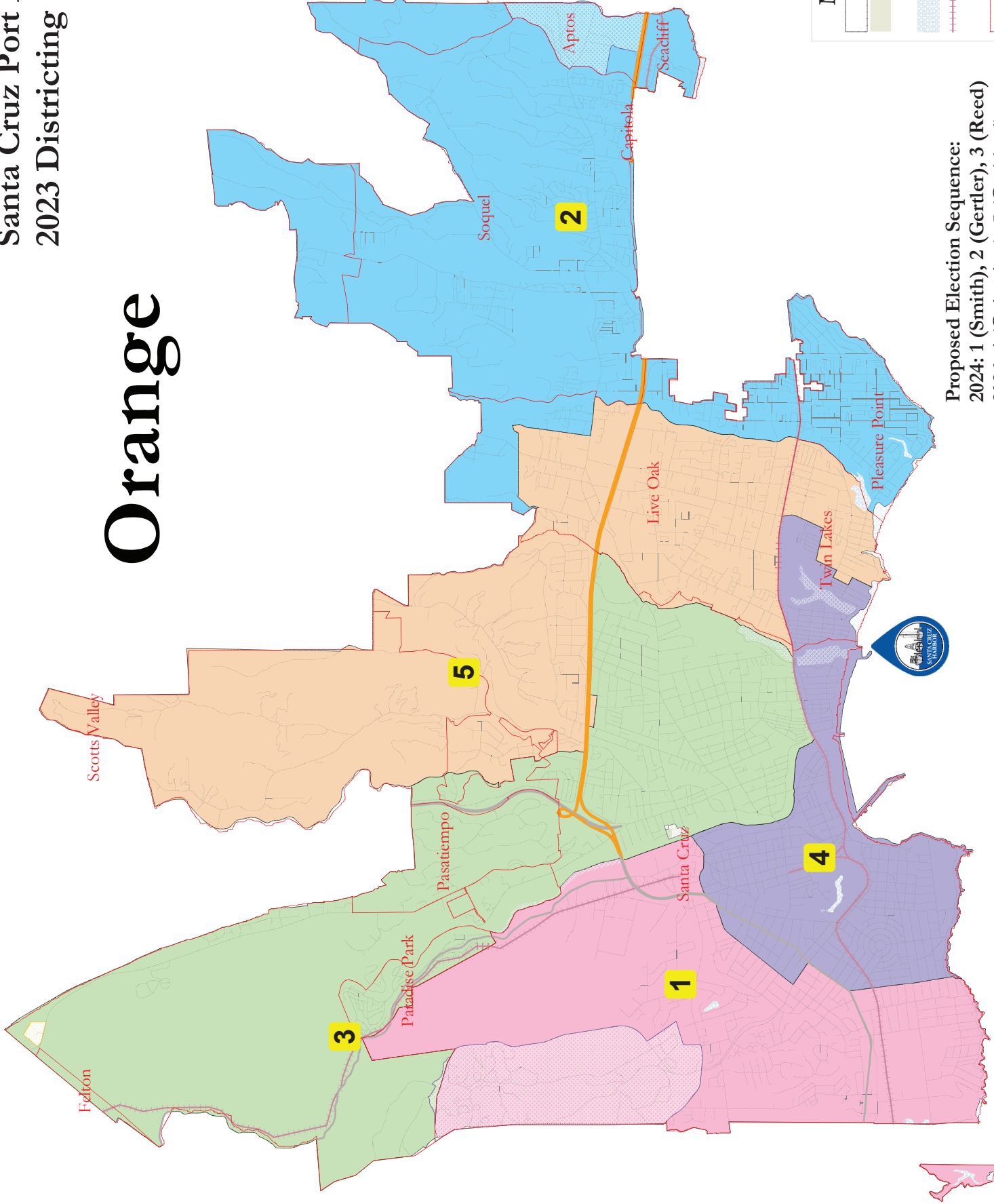
Total population data from the 2020 Decennial Census.

Surname-based Voter Registration and Turnout data from the California Statewide Database.

Latino voter registration and turnout data are Spanish-surname counts adjusted using Census Population Department undercount estimates. NH White and NH Black registration and turnout counts estimated by NDC. Citizen Voting Age Pop., Age, Immigration, and other demographics from the 2015-2019 American Community Survey and Special Tabulation 5-year data.

Santa Cruz Port District  
2023 Districting

# Orange



**Map layers**

- Orange
- Landmark Area
- Landmark Point
- Water Area
- Railroad
- Streets
- City / Town

**Proposed Election Sequence:**  
 2024: 1 (Smith), 2 (Gertler), 3 (Reed)  
 2026: 4 (Geisreiter), 5 (Goddard)



Orange							
District		1	2	3	4	5	Total
	Total Pop	20,113	19,928	20,171	19,177	19,556	98,945
	Deviation from ideal	324	139	382	-612	-233	994
	% Deviation	1.64%	0.70%	1.93%	-3.09%	-1.18%	5.02%
Total Pop	% Hisp	21.6%	22%	24%	23%	28%	24%
	% NH White	57%	67%	63%	61%	60%	62%
	% NH Black	4%	1%	2%	2%	2%	2%
	% Asian-American	14%	5%	7%	9%	6%	8%
Citizen Voting Age Pop	Total	18,630	16,548	16,215	14,130	14,196	79,719
	% Hisp	19%	16%	13%	15%	18%	16%
	% NH White	61%	74%	72%	74%	75%	71%
	% NH Black	3%	2%	2%	2%	2%	2%
	% Asian/Pac.Isl.	15%	3%	5%	5%	5%	7%
Voter Registration (Nov 2020)	Total	12,159	14,560	14,348	12,815	13,148	67,030
	% Latino est.	11%	13%	13%	13%	16%	13%
	% Spanish-Surnamed	10%	12%	12%	12%	15%	12%
	% Asian-Surnamed	5%	2%	3%	3%	2%	3%
	% Filipino-Surnamed	1%	1%	1%	1%	1%	1%
	% NH White est.	83%	83%	83%	79%	80%	82%
	% NH Black	1%	1%	1%	3%	1%	2%
Voter Turnout (Nov 2020)	Total	10,034	12,824	12,373	10,780	11,374	57,385
	% Latino est.	10%	12%	12%	12%	15%	12%
	% Spanish-Surnamed	9%	11%	11%	11%	13%	11%
	% Asian-Surnamed	4%	2%	3%	3%	2%	3%
	% Filipino-Surnamed	4%	2%	3%	3%	2%	3%
	% NH White est.	84%	84%	84%	80%	81%	83%
	% NH Black	1%	1%	1%	3%	1%	1%
Voter Turnout (Nov 2018)	Total	8,592	9,786	9,950	8,433	8,880	45,641
	% Latino est.	16%	16%	15%	18%	19%	17%
	% Spanish-Surnamed	10%	9%	9%	10%	11%	10%
	% Asian-Surnamed	4%	2%	2%	3%	2%	3%
	% Filipino-Surnamed	1%	1%	1%	1%	1%	1%
	% NH White est.	83%	86%	86%	82%	84%	84%
	% NH Black est.	1%	1%	1%	3%	1%	1%
ACS Pop. Est.	Total	22,215	21,112	20,252	19,137	19,379	102,095
Age	age0-19	28%	21%	16%	21%	21%	21%
	age20-60	56%	53%	63%	59%	55%	57%
	age60plus	16%	26%	21%	20%	25%	21%
Immigration	immigrants	14%	10%	11%	16%	15%	13%
	naturalized	47%	56%	54%	37%	42%	46%
Language spoken at home	english	71%	82%	81%	75%	73%	76%
	spanish	12%	14%	12%	16%	21%	15%
	asian-lang	9%	1%	3%	4%	2%	4%
	other lang	8%	2%	4%	5%	4%	5%
Language Fluency	Speaks Eng. "Less than Very Well"	4%	5%	5%	8%	9%	6%
Education (among those age 25+)	hs-grad	33%	50%	46%	42%	48%	45%
	bachelor	28%	27%	28%	28%	26%	27%
	graduatedegree	36%	16%	21%	23%	18%	22%
Child in Household	child-under18	19%	26%	22%	20%	28%	23%
Pct of Pop. Age 16+	employed	52%	64%	69%	62%	58%	61%
Household Income	income 0-25k	15%	10%	18%	25%	13%	16%
	income 25-50k	17%	13%	14%	15%	16%	15%
	income 50-75k	9%	12%	10%	9%	15%	11%
	income 75-200k	38%	47%	42%	37%	40%	41%
	income 200k-plus	21%	18%	16%	14%	16%	17%
Housing Stats	single family	77%	81%	72%	60%	74%	72%
	multi-family	23%	19%	28%	40%	26%	28%
	rented	41%	33%	53%	62%	40%	46%
	owned	59%	67%	47%	38%	60%	54%

Total population data from the 2020 Decennial Census.

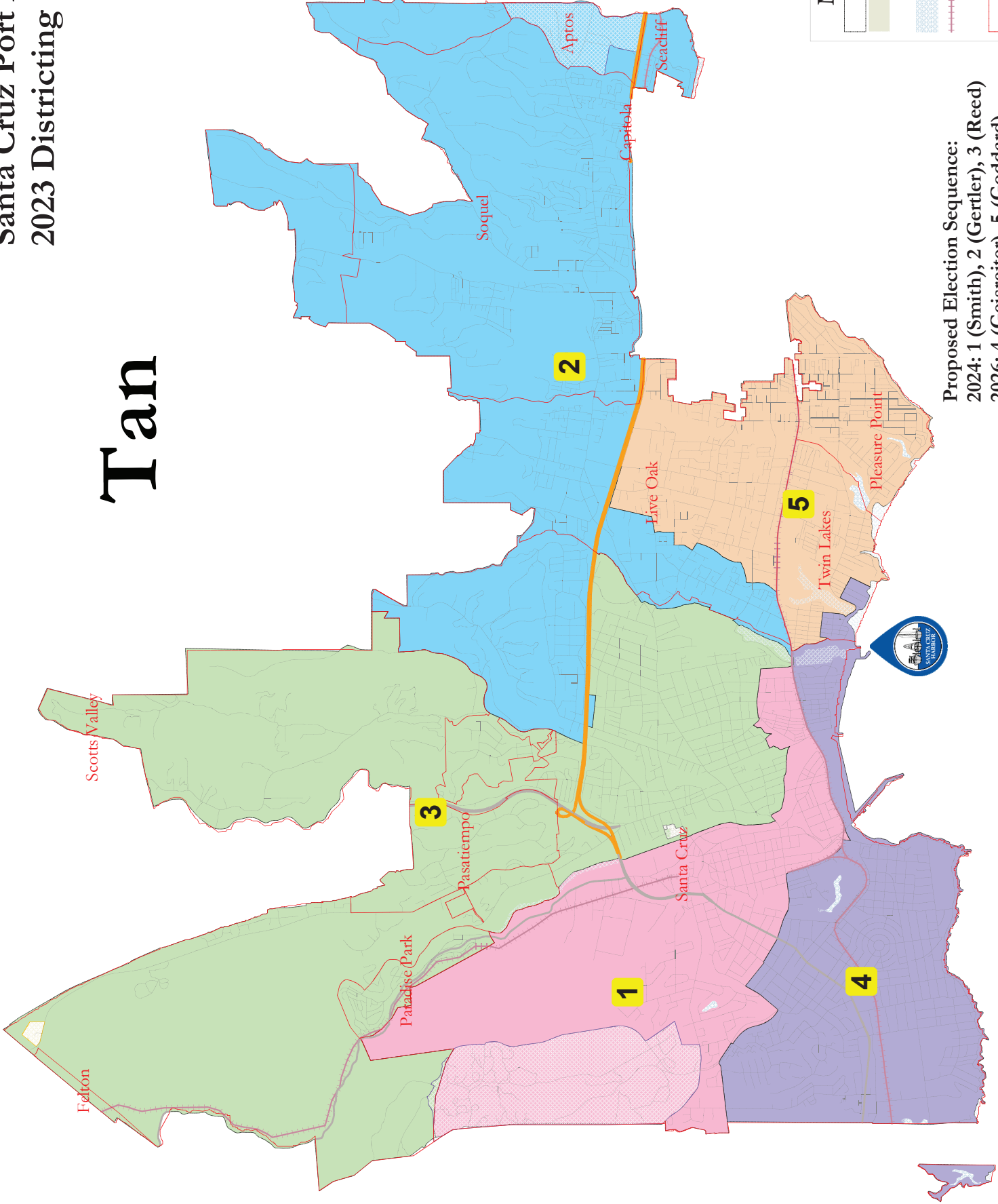
Surname-based Voter Registration and Turnout data from the California Statewide Database.

Latino voter registration and turnout data are Spanish-surname counts adjusted using Census Population Department undercount estimates. NH White and NH Black registration and turnout counts estimated by NDC. Citizen Voting Age Pop., Age, Immigration, and other demographics from the 2015-2019 American Community Survey and Special Tabulation 5-year data.



Santa Cruz Port District  
2023 Districting

# Tan





Tan							
District		1	2	3	4	5	Total
	Total Pop	19,827	19,230	20,348	19,482	20,058	98,945
	Deviation from ideal	38	-559	559	-307	269	1,118
	% Deviation	0.19%	-2.82%	2.82%	-1.55%	1.36%	5.65%
Total Pop	% Hisp	27.2%	23%	23%	17%	27%	24%
	% NH White	52%	65%	63%	66%	62%	62%
	% NH Black	5%	2%	2%	2%	2%	2%
	% Asian-American	13%	5%	7%	10%	5%	8%
Citizen Voting Age Pop	Total	15,871	15,124	16,565	16,844	15,315	79,719
	% Hisp	17%	19%	13%	17%	16%	16%
	% NH White	64%	75%	71%	70%	74%	71%
	% NH Black	3%	2%	2%	2%	2%	2%
	% Asian/Pac.Isl.	14%	3%	5%	8%	5%	7%
Voter Registration (Nov 2020)	Total	10,558	13,611	14,554	14,484	13,823	67,030
	% Latino est.	13%	14%	13%	11%	15%	13%
	% Spanish-Surnamed	12%	13%	12%	10%	14%	12%
	% Asian-Surnamed	4%	2%	3%	3%	2%	3%
	% Filipino-Surnamed	1%	1%	1%	1%	1%	1%
	% NH White est.	77%	82%	82%	83%	82%	82%
	% NH Black	3%	2%	1%	2%	1%	2%
Voter Turnout (Nov 2020)	Total	8,372	12,053	12,563	12,500	11,897	57,385
	% Latino est.	12%	13%	11%	10%	14%	12%
	% Spanish-Surnamed	11%	12%	11%	10%	13%	11%
	% Asian-Surnamed	4%	2%	3%	3%	2%	3%
	% Filipino-Surnamed	4%	2%	3%	3%	2%	3%
	% NH White est.	79%	83%	84%	84%	83%	83%
	% NH Black	2%	2%	1%	2%	1%	1%
Voter Turnout (Nov 2018)	Total	7,316	9,259	10,144	9,797	9,125	45,641
	% Latino est.	20%	16%	14%	15%	19%	17%
	% Spanish-Surnamed	11%	10%	9%	9%	11%	10%
	% Asian-Surnamed	4%	2%	2%	3%	2%	3%
	% Filipino-Surnamed	1%	1%	1%	1%	1%	1%
	% NH White est.	80%	85%	86%	85%	84%	84%
	% NH Black est.	2%	1%	1%	2%	1%	1%
ACS Pop. Est.	Total	20,116	19,817	20,609	21,084	20,470	102,095
Age	age0-19	32%	22%	17%	18%	19%	21%
	age20-60	53%	51%	62%	62%	56%	57%
	age60plus	15%	27%	21%	20%	24%	21%
Immigration	immigrants	15%	10%	11%	13%	16%	13%
	naturalized	36%	51%	54%	49%	46%	46%
Language spoken at home	english	69%	81%	82%	76%	74%	76%
	spanish	14%	15%	11%	13%	20%	15%
	asian-lang	8%	1%	3%	6%	2%	4%
	other lang	8%	3%	4%	5%	3%	5%
Language Fluency	Speaks Eng. "Less than Very Well"	6%	4%	4%	5%	10%	6%
Education (among those age 25+)	hs-grad	39%	54%	46%	38%	45%	45%
	bachelor	29%	25%	28%	28%	27%	27%
	graduatedegree	27%	17%	21%	30%	18%	22%
Child in Household	child-under18	20%	27%	23%	20%	26%	23%
Pct of Pop. Age 16+	employed	53%	62%	68%	60%	62%	61%
Household Income	income 0-25k	24%	10%	17%	19%	14%	16%
	income 25-50k	18%	14%	14%	14%	15%	15%
	income 50-75k	9%	15%	10%	9%	13%	11%
	income 75-200k	36%	45%	42%	40%	41%	41%
	income 200k-plus	13%	16%	18%	18%	17%	17%
Housing Stats	single family	54%	82%	74%	77%	72%	72%
	multi-family	46%	18%	26%	23%	28%	28%
	rented	59%	33%	49%	50%	42%	46%
	owned	41%	67%	51%	50%	58%	54%

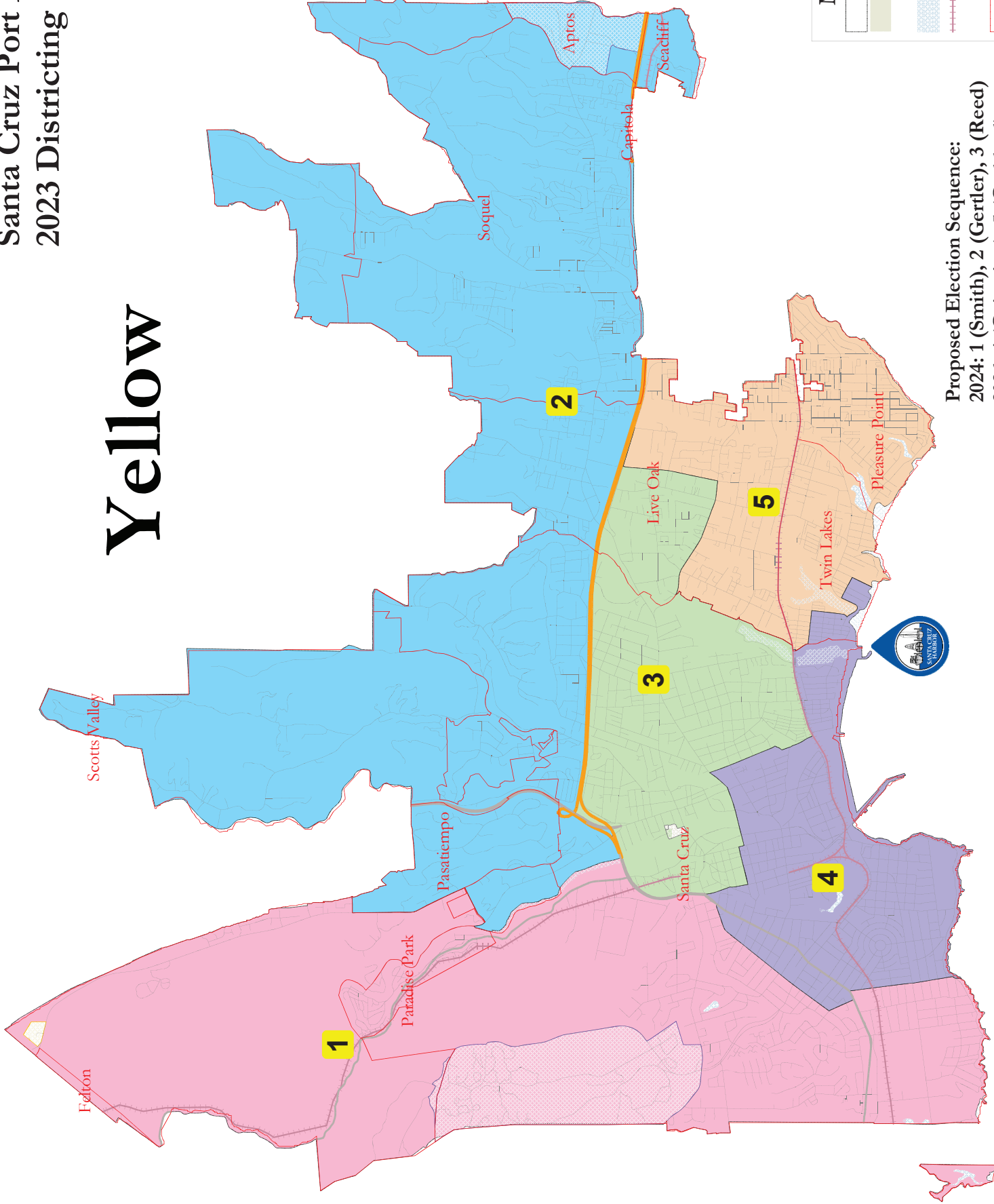
Total population data from the 2020 Decennial Census.

Surname-based Voter Registration and Turnout data from the California Statewide Database.

Latino voter registration and turnout data are Spanish-surname counts adjusted using Census Population Department undercount estimates. NH White and NH Black registration and turnout counts estimated by NDC. Citizen Voting Age Pop., Age, Immigration, and other demographics from the 2015-2019 American Community Survey and Special Tabulation 5-year data.

Santa Cruz Port District  
2023 Districting

# Yellow



Proposed Election Sequence:  
 2024: 1 (Smith), 2 (Gertler), 3 (Reed)  
 2026: 4 (Geisreiter), 5 (Goddard)

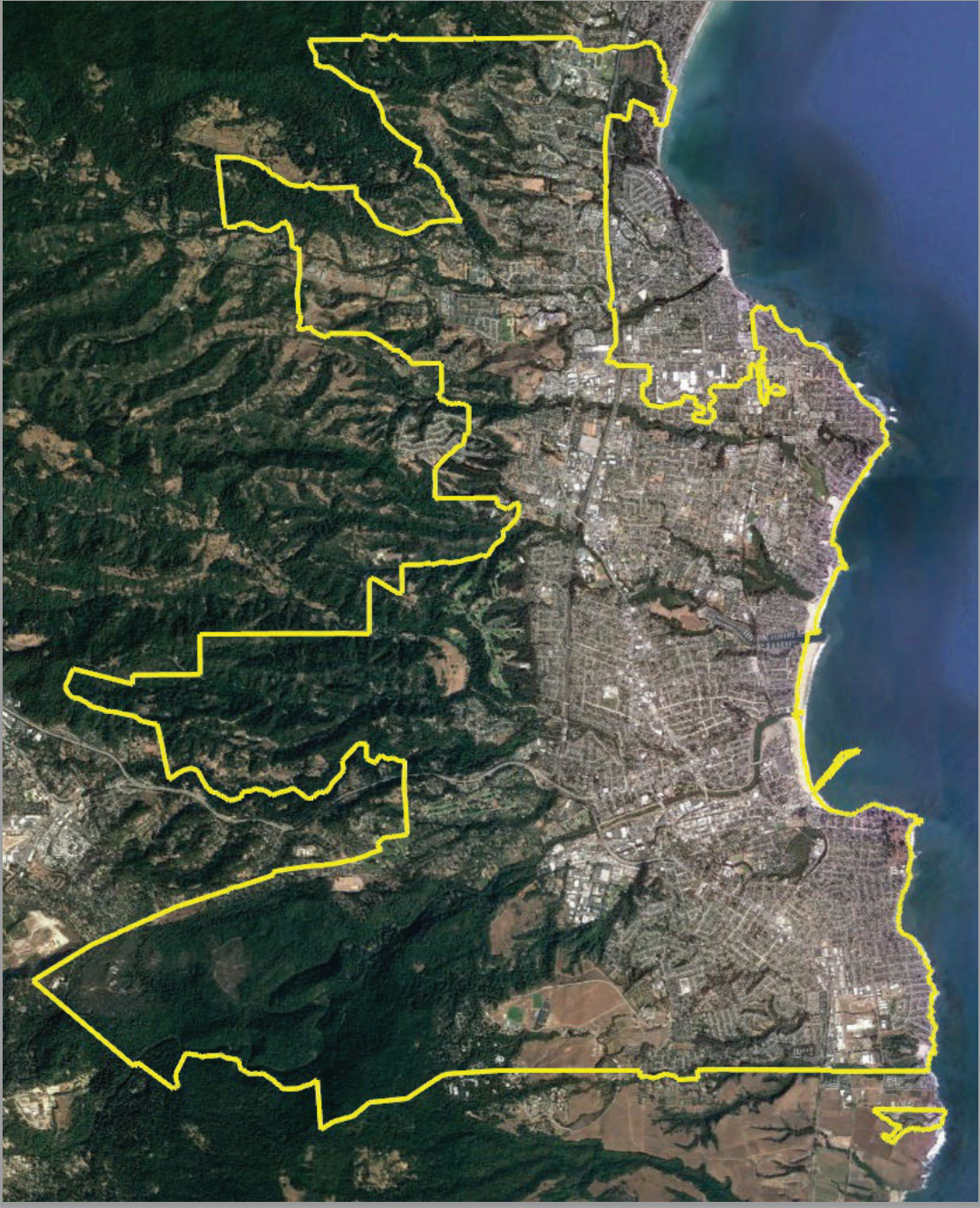
Yellow							
District		1	2	3	4	5	Total
	Total Pop	19,684	19,358	19,741	20,242	19,920	98,945
	Deviation from ideal	-105	-431	-48	453	131	884
	% Deviation	-0.53%	-2.18%	-0.24%	2.29%	0.66%	4.47%
Total Pop	% Hisp	21.2%	20%	23%	26%	27%	24%
	% NH White	57%	68%	63%	58%	61%	62%
	% NH Black	4%	2%	2%	2%	2%	2%
	% Asian-American	14%	6%	6%	9%	5%	8%
Citizen Voting Age Pop	Total	18,369	15,429	15,526	15,076	15,319	79,719
	% Hisp	18%	15%	15%	17%	16%	16%
	% NH White	60%	76%	75%	72%	73%	71%
	% NH Black	3%	2%	1%	3%	2%	2%
	% Asian/Pac.Isl.	15%	3%	5%	5%	5%	7%
Voter Registration (Nov 2020)	Total	12,084	14,131	14,041	13,106	13,668	67,030
	% Latino est.	10%	12%	14%	14%	15%	13%
	% Spanish-Surnamed	10%	11%	13%	13%	14%	12%
	% Asian-Surnamed	5%	3%	2%	3%	2%	3%
	% Filipino-Surnamed	1%	1%	1%	1%	1%	1%
	% NH White est.	82%	83%	82%	79%	82%	82%
	% NH Black	1%	2%	0%	3%	1%	2%
Voter Turnout (Nov 2020)	Total	9,994	12,572	12,057	10,965	11,797	57,385
	% Latino est.	9%	11%	13%	13%	14%	12%
	% Spanish-Surnamed	9%	11%	12%	12%	13%	11%
	% Asian-Surnamed	4%	3%	2%	3%	2%	3%
	% Filipino-Surnamed	4%	3%	2%	3%	2%	3%
	% NH White est.	84%	84%	83%	80%	83%	83%
	% NH Black	1%	2%	0%	3%	1%	1%
Voter Turnout (Nov 2018)	Total	8,617	9,780	9,460	8,780	9,004	45,641
	% Latino est.	15%	14%	16%	19%	19%	17%
	% Spanish-Surnamed	9%	8%	10%	11%	11%	10%
	% Asian-Surnamed	4%	2%	2%	3%	2%	3%
	% Filipino-Surnamed	1%	1%	1%	1%	1%	1%
	% NH White est.	83%	86%	87%	82%	84%	84%
	% NH Black est.	1%	2%	0%	3%	1%	1%
ACS Pop. Est.	Total	21,980	19,908	19,641	20,197	20,369	102,095
Age	age0-19	28%	22%	16%	20%	19%	21%
	age20-60	55%	52%	61%	62%	56%	57%
	age60plus	17%	26%	22%	18%	25%	21%
Immigration	immigrants	13%	9%	11%	16%	16%	13%
	naturalized	48%	53%	46%	40%	48%	46%
Language spoken at home	english	71%	85%	81%	73%	73%	76%
	spanish	12%	11%	12%	18%	22%	15%
	asian-lang	9%	1%	3%	4%	2%	4%
	other lang	8%	3%	4%	5%	3%	5%
Language Fluency	Speaks Eng. "Less than Very Well"	4%	3%	5%	8%	9%	6%
Education (among those age 25+)	hs-grad	33%	51%	49%	42%	45%	45%
	bachelor	30%	27%	25%	29%	27%	27%
	graduatedegree	34%	17%	22%	23%	18%	22%
Child in Household	child-under18	20%	27%	24%	20%	25%	23%
Pct of Pop. Age 16+	employed	51%	61%	66%	65%	62%	61%
Household Income	income 0-25k	14%	8%	20%	24%	15%	16%
	income 25-50k	15%	12%	16%	16%	17%	15%
	income 50-75k	9%	14%	11%	10%	13%	11%
	income 75-200k	41%	46%	40%	37%	40%	41%
	income 200k-plus	22%	21%	14%	14%	16%	17%
Housing Stats	single family	82%	86%	66%	61%	71%	72%
	multi-family	18%	14%	34%	39%	29%	28%
	rented	37%	29%	53%	64%	41%	46%
	owned	63%	71%	47%	36%	59%	54%

Total population data from the 2020 Decennial Census.

Surname-based Voter Registration and Turnout data from the California Statewide Database.

Latino voter registration and turnout data are Spanish-surname counts adjusted using Census Population Department undercount estimates. NH White and NH Black registration and turnout counts estimated by NDC. Citizen Voting Age Pop., Age, Immigration, and other demographics from the 2015-2019 American Community Survey and Special Tabulation 5-year data.





# Santa Cruz Port District Draft Maps

April 25, 2023

Douglas Johnson  
National Demographics Corporation

# Districting Process

---

Step	Description
<b>Two Initial Hearings</b> March 6 & 28	Held prior to release of draft maps. Education and to solicit input on the composition of districts.
<b>Release draft maps</b>	Maps must be posted at least 7 days prior to 3 <sup>rd</sup> hearing.
<b>Two hearings on draft maps</b> April 25 & May 23	Two meetings to discuss and revise the draft maps and to discuss the election sequence. Map may be adopted May 23.
<b>Map adoption</b> Possibly May 23	Map may be adopted May 23. If needed, an additional meeting will be scheduled. Final map must be posted at least 7 days prior to adoption.

# Redistricting Rules and Goals

---

## Federal Laws

Equal Population  
Federal Voting Rights Act  
No Racial Gerrymandering



## Traditional Redistricting Principles

Communities of interest  
Compact  
Contiguous  
Visible (Natural & man-made) boundaries  
Respect voters' choices / continuity in office  
Planned future growth

# Community Input

---

- If possible, have each division touch the Harbor
- ▣ If not possible, have each division touch either the Harbor or the Ocean

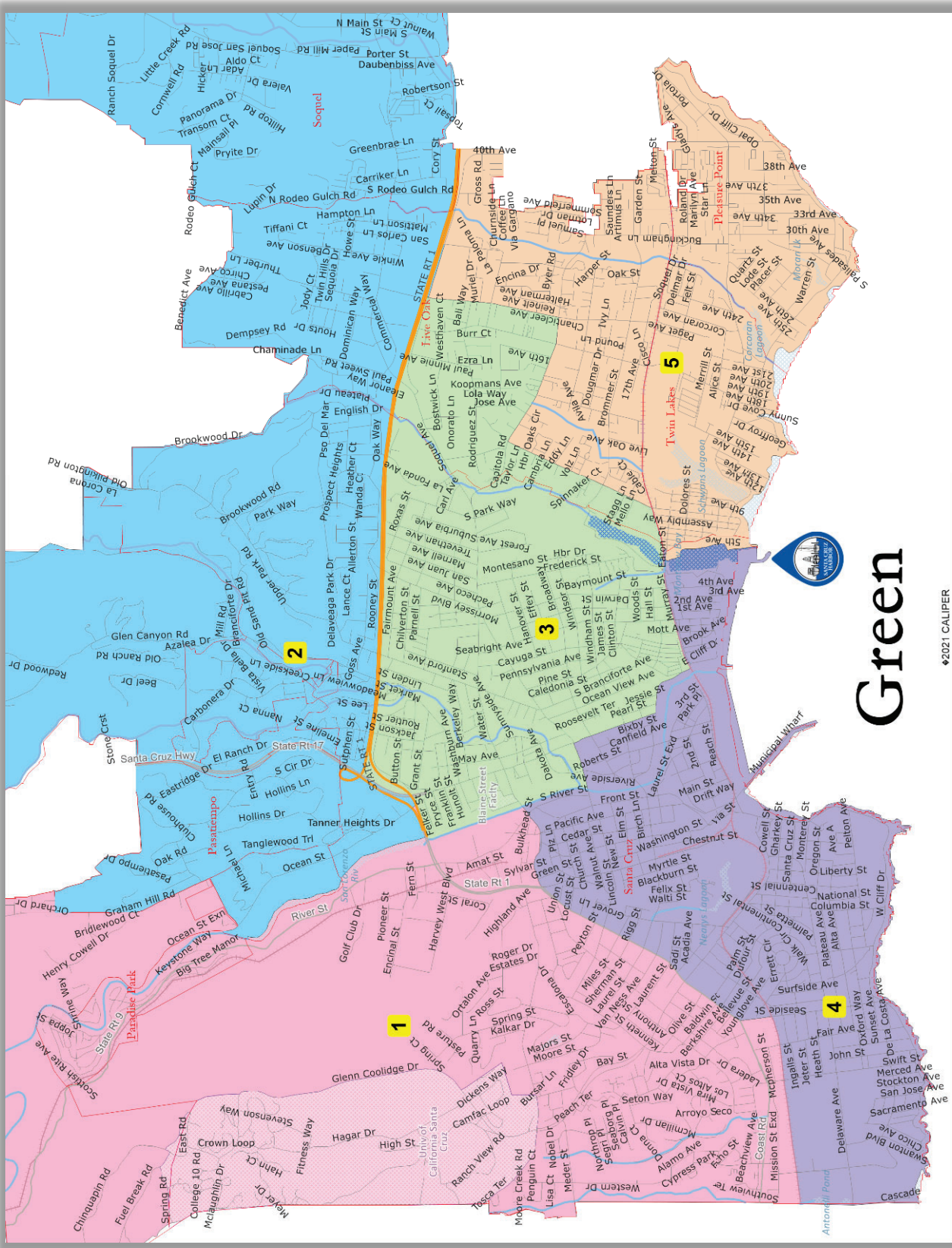


# Draft Maps

---

- Starting point maps – many changes can be made prior to final adoption
- Drawn to illustrate a range of options
  - Each map illustrates a different way of balancing the “traditional redistricting principles”
  - Residents and the Board can suggest preferred ways to ‘mix and match’ the elements of the different maps
- More detailed view available in the [interactive review map](#).

- Highly compact.
- Borders follow easily-recognizable major roads & rivers as much as possible.
- Divisions 1, 2, 3, 4 and 5 touch the Harbor.



**Green**

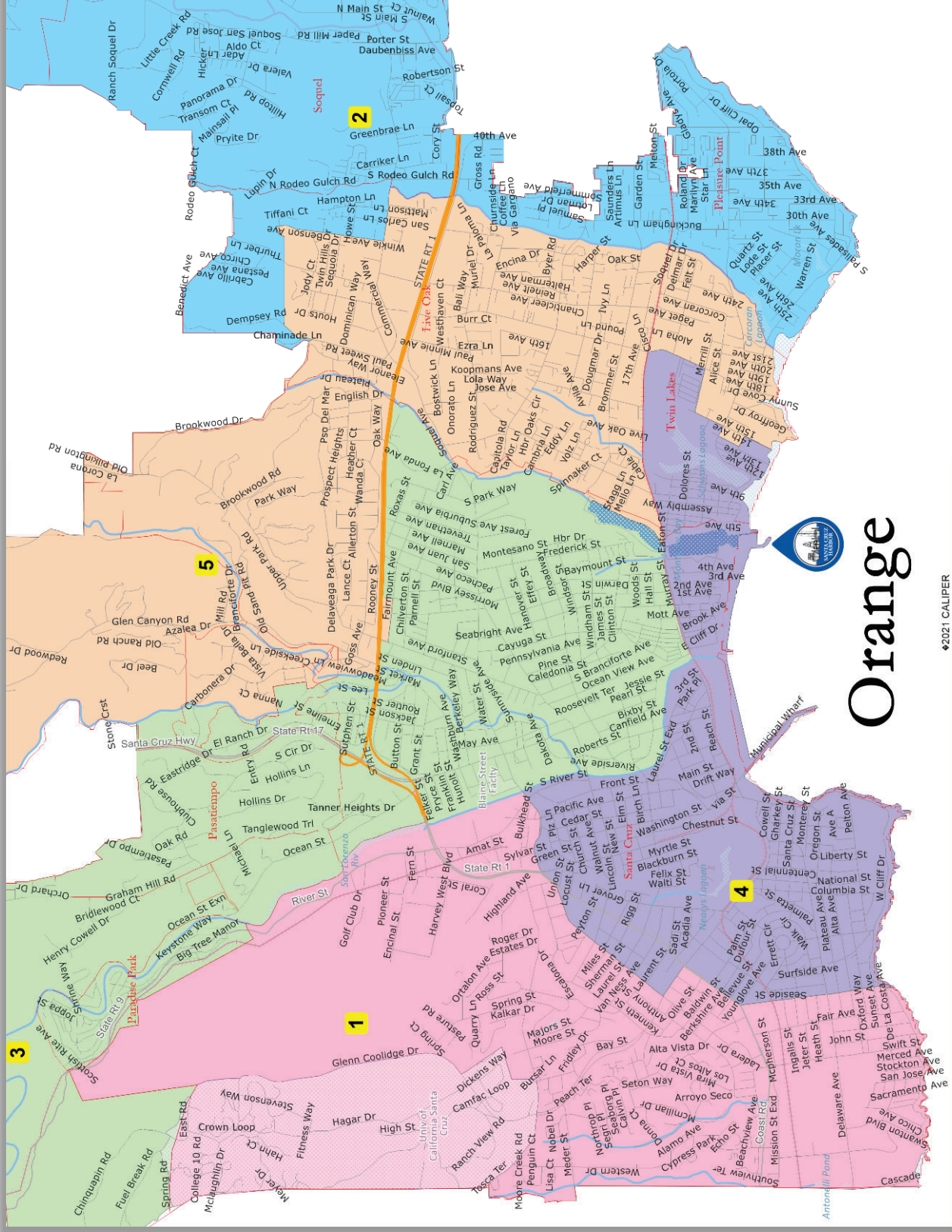
© 2021 CALIPER

2024: 1 (Smith), 2 (Gertler), 3 (Reed)  
 2026: 4 (vacant), 5 (Geisreiter & Goddard)





- Divisions 3, 4 and 5 touch the Harbor.
- Divisions 1 and 2 touch the Ocean.
- Borders follow easily-recognizable rivers (and, secondarily, major roads) as much as possible.



©2021 CALIPER

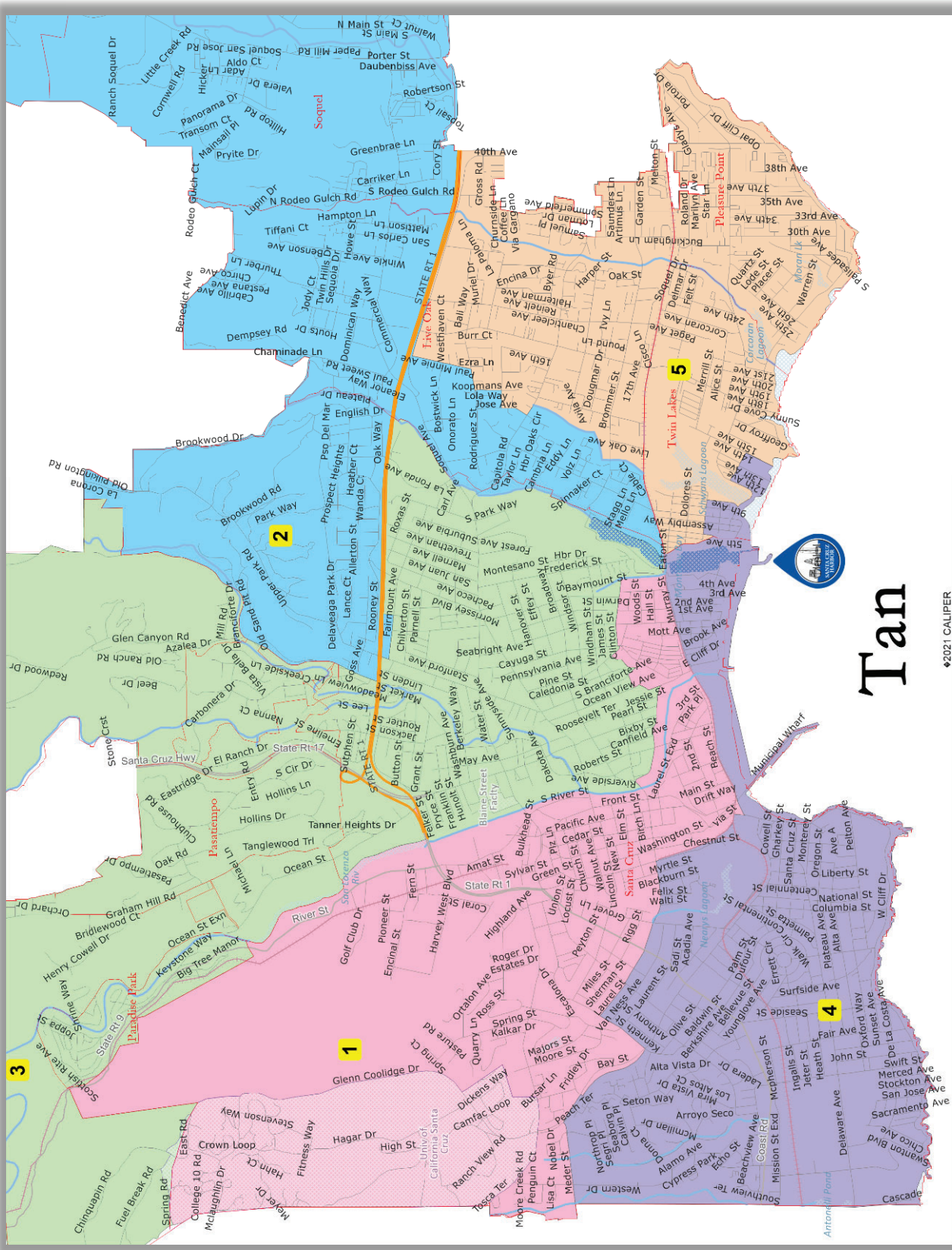
- 2024: 1 (Smith), 2 (Gertler), 3 (Reed)
- 2026: 4 (Geisreiter), 5 (Goddard)



April 25, 2023



- All five divisions touch the Harbor.
- Borders follow easily-recognizable major roads & rivers where possible, but less than Orange or Tan options.



# Tan

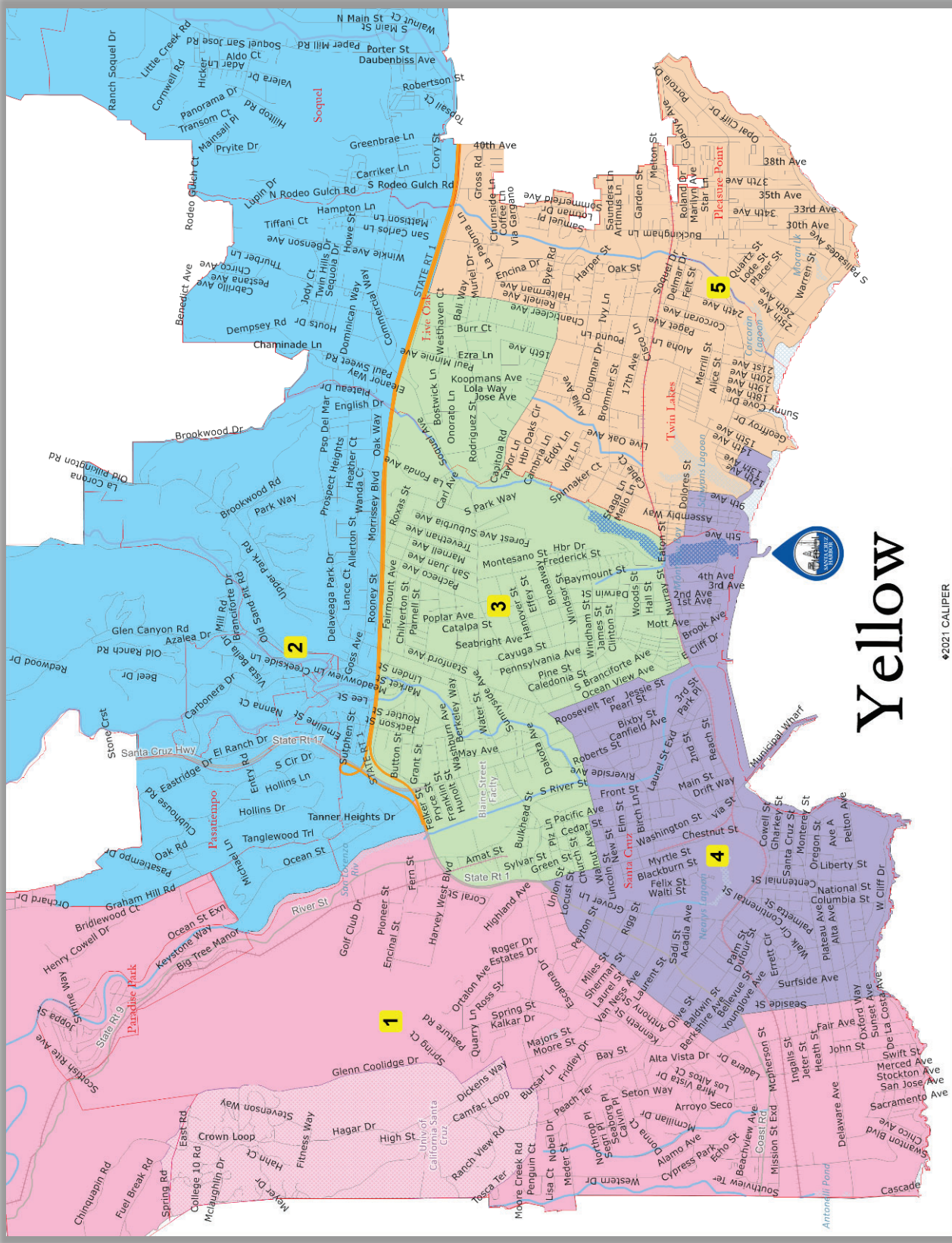
©2021 CALIPER

- 2024: 1 (Smith), 2 (Gertler), 3 (Reed)
- 2026: 4 (Geisreiter), 5 (Goddard)





- Highly compact with one small exception.
- Borders follow easily-recognizable major roads & rivers as much as possible.
- Divisions 3, 4 and 5 touch the Harbor.
- Division 1 touches the Ocean.



**Yellow**

©2021 CALIPER

2024: 1 (Smith), 2 (Gertler), 3 (Reed)

2026: 4 (Geisreiter), 5 (Goddard)



# Hearing & Discussion

---

- What do you like and dislike about each map?
- Which maps do you prefer?
- How can the preferred maps be improved?
  - This could be a mix and match approach

# Next Steps

---

- NDC will revise the maps as requested.
- Maps will be posted by May 16<sup>th</sup> (likely well before that).
- Hearing and possible map adoption May 23<sup>rd</sup>.