

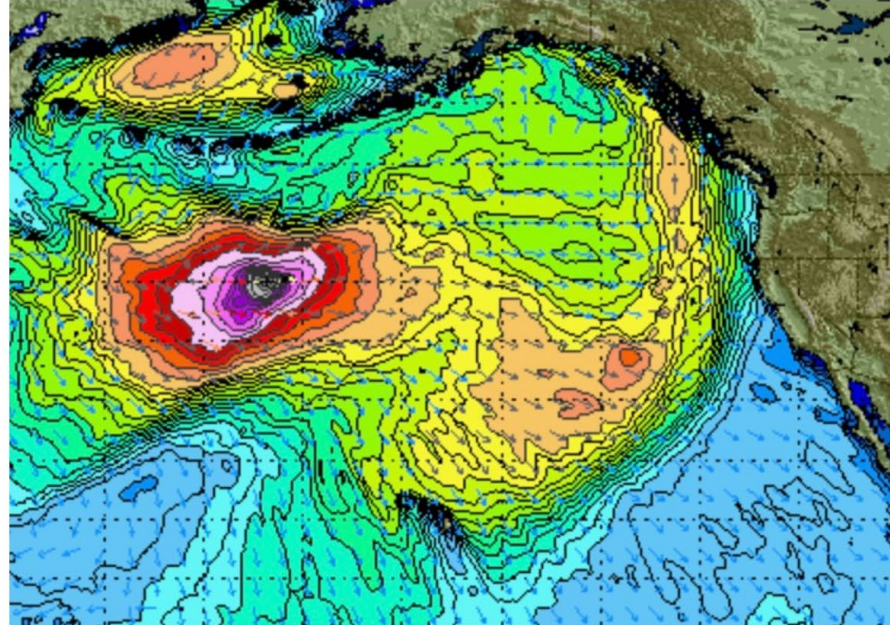


# Storm Surge Event Recovery Effort

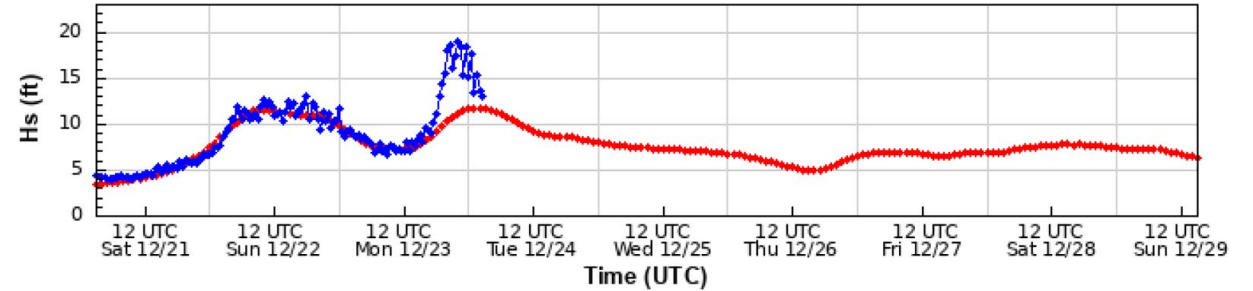


## Soquel Cove South, CA Conditions + Forecast

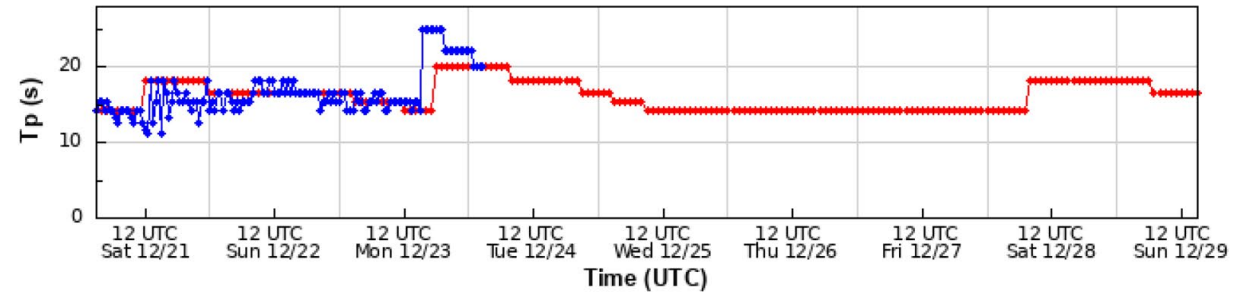
Observations: CDIP buoy 281  
Forecast : BP281, ECMWF-driven



### Wave height - Station 281



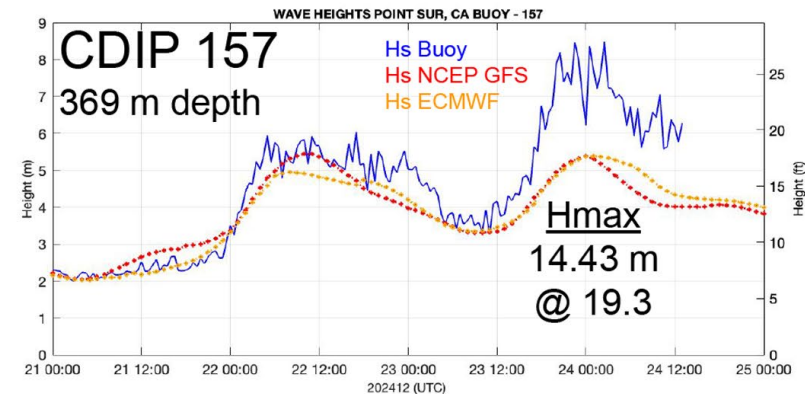
### Peak period - Station 281

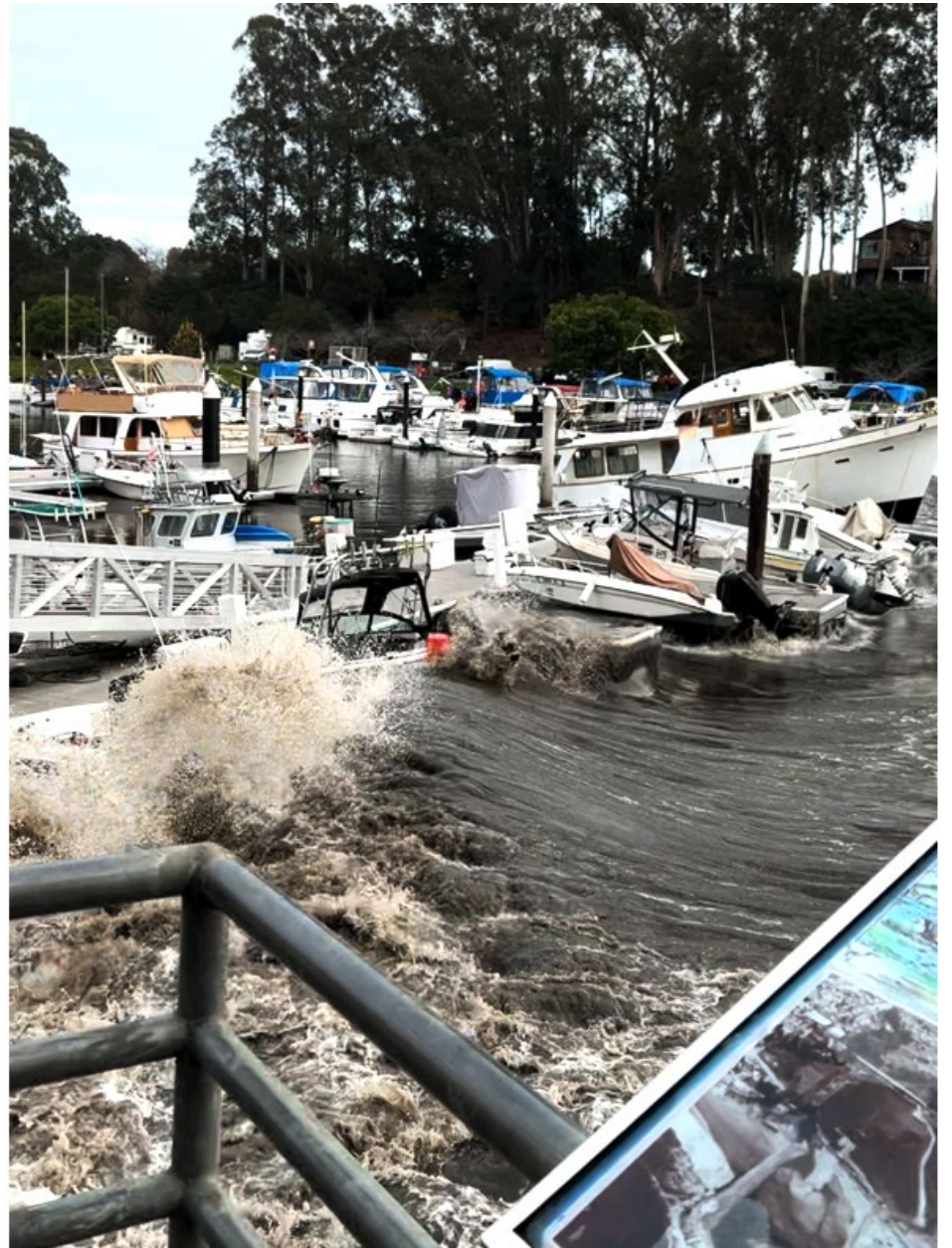


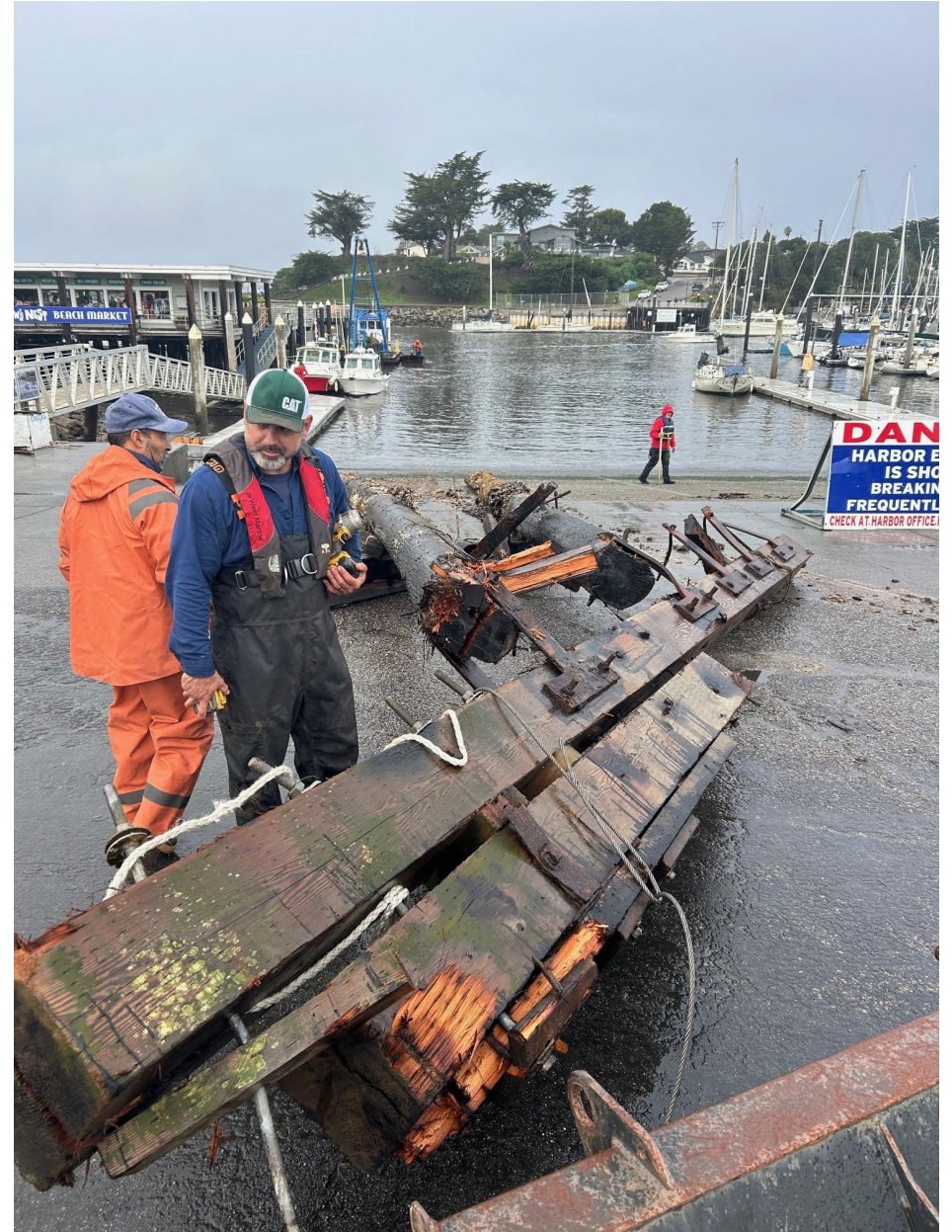
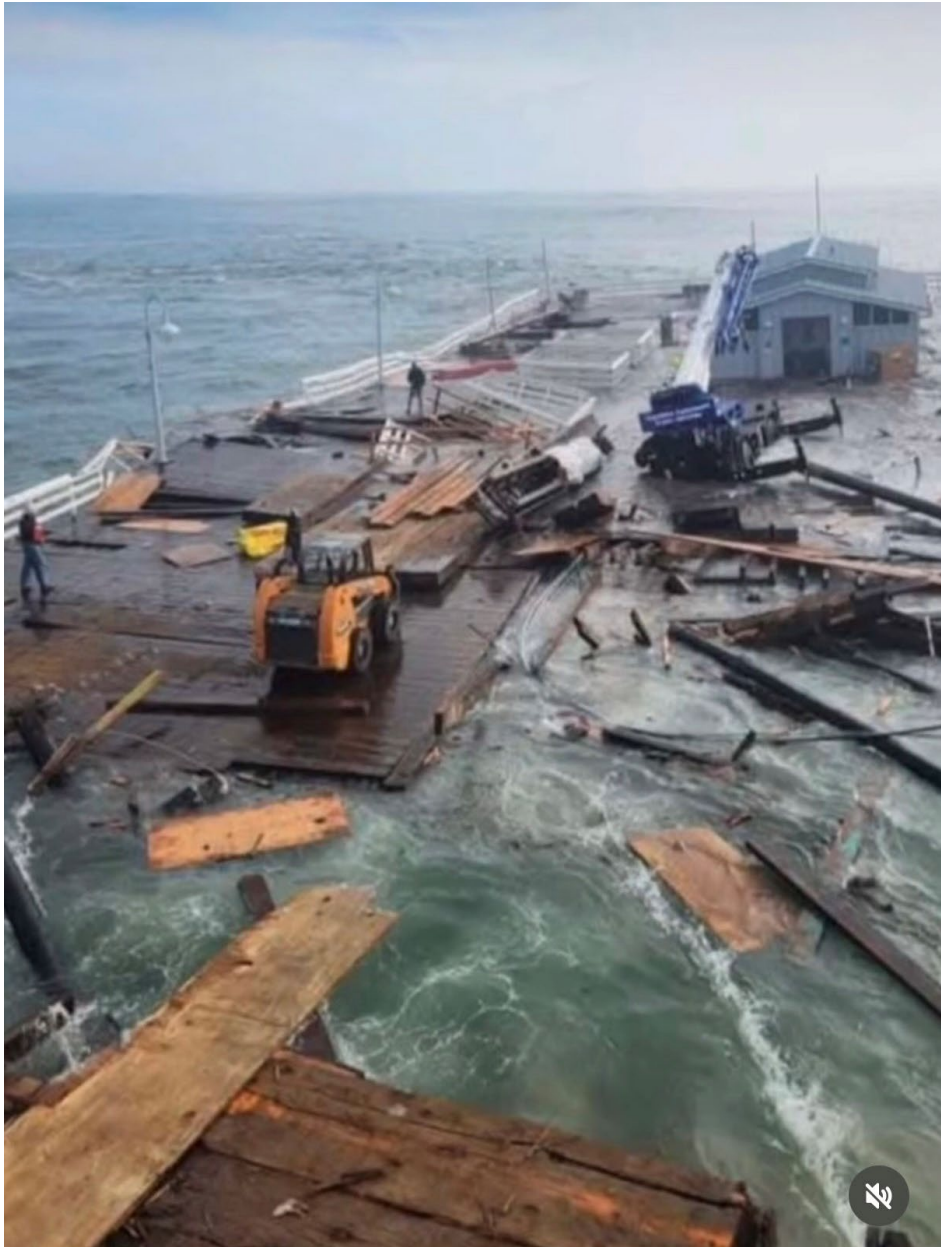
December 23<sup>rd</sup>, 2024 swell was generated by an intense North Pacific extratropical cyclone, which greatly outperformed both European (ECMWF) and Global (NCEP GFS) forecasting models.

Buoy stations in Hawaii, Washington, Oregon and California set all-time records for spectral wave energy, some by factors of 2 or more, with recorded wave periods of 25 seconds for the Central Coast.

Observed wave height was in the top 20 all-time from most buoy stations along the West Coast.













December 24, 2024





December 24, 2024







December 24, 2024





December 24, 2024





December 24, 2024





December 24, 2024





December 24, 2024





December 27, 2024





December 27, 2024





December 27, 2024







December 27, 2024





December 27, 2024





December 27, 2024





December 27, 2024





December 31, 2024





December 31, 2024





January 10, 2025





January 10, 2025







January 10, 2025



P  
PAY FOR  
PARKING HERE  
DISPLAY RECEIPT  
ON DASH  
FROM AN AUTOMATED  
SERVICE ONLY

L421011000  
United  
Rentals  
800-UR-RENT

United  
Rentals  
1-800-RENTS

FIRE HOSE

SLIP RISK  
WATER ONLY



January 28, 2025





January 28, 2025

